

PRODUCTS
SOLUTIONS
HIGHLIGHTS

2022

A.I.
AUTOMATION
LOGISTICS
SECURITY
DEFENSE
MEDICAL
SMART CITY
INDUSTRIAL IOT

Empowered by Hardware Solutions



Table of contents

Table of contents	2	GPU Computers	22
About us	3	GPU Servers	23
Embedded Box PCs	4	GPU Expansions	23
Built-in GPUs / MXM Modules	5	PCIe Expansions	24
Optional PCIe/PCI Slots	5	PCIe Expansion Systems	25
Wall / Din-Rail Mounting	6	PCIe Expansion Kits	25
In-Vehicle Installation	6	PCIe Components	25
IP65 Rugged Computers	7	Industrial Flash Storage	26
Compact Mini PCs	7	Industrial SSDs and Modules	26
19-Inch Industrial PCs	8	Industrial Memory Cards	27
1U Systems	8	All Form Factors	27
2U - 4U Systems	9	Medical Hardware	28
Panel PCs & Touch Displays	10	SEAL Panel PC Series	28
Chassis Type Solutions	11	Medical Box PCs	29
Panel Mount Solutions	12	Medical Servers	29
Open Frame Solutions	13	Medical Tablets	29
Rugged Tablets & Handhelds	14	Unified Communications	30
SCORPION Fields of Application	14	FonComfort™ Telephony Suite	30
SCORPION Tablets	15	Sangoma UC Solutions	31
SCORPION Handhelds	16	Sangoma Switchvox	31
SCORPION Accessories	17	Sangoma PBXact	32
IIoT Hardware	18	Session Border Controller	32
Cellular Routers	18	Voice-over-IP Gateways	32
Digi Remote Manager	18	Telephony Cards	33
Digi XBee® Ecosystem	19	Hardware for Microsoft® Teams	33
System-on-Modules	19		
USB Connectivity	20		
Serial Connectivity	20		
Ethernet Switches	21		

About us

„As a provider and value-added distributor for industrial hardware solutions, BRESSNER Technology GmbH has been offering high-quality products, components and accessories for over 25 years. With our range of services, we serve all industries, where industrial-grade hardware solutions are required. Many years of experience, customer-oriented service and profound know-how complete our portfolio. Bressner Technology GmbH is a subsidiary of One Stop Systems Inc.“



We are aware that digitalization trends, such as artificial intelligence or Industrial IoT, also brings out new challenges to leading industrial companies. At the same time, new technologies offer opportunities to expand and revolutionize the business model. Therefore it is important for future-oriented companies to use customized solutions by acquiring new technologies in order to keep up with the speed of digitalization. It is becoming apparent that companies without a digitization strategy are increasingly experiencing problems with productivity and profitability, which is having a detrimental effect on their competitiveness. That's why we support companies of all sizes with tailor-made solutions for Machine Automation, Manufacturing, Logistics & Transportation, Intelligent Retail, Communications, Industrial IoT and Networking, Healthcare, Security, AI and Deep Learning. Through our growing partner network, we are able to cover the following core product segments:

- ▶ Industrial and Embedded Computers
- ▶ Panel PC and Touch Display Solutions
- ▶ Rugged Tablets and Handhelds
- ▶ Industrial Flash Storage
- ▶ GPU Computers
- ▶ PCIe Expansions
- ▶ IIoT Hardware
- ▶ Medical Hardware
- ▶ Unified Communications

We are convinced that both large and small-sized companies can use their business model to innovate and efficiently position themselves in the increasingly rapid pace of digitization and thus maintain their competitive edge.

Martin Stiborski
Managing Director

A stylized, handwritten signature in black ink, appearing to read 'M. Stiborski'.

Embedded Box PCs

Embedded Box PCs are designed for industrial applications. Our hardware is best-known for its modular and compact design. Typical fields of application for Embedded Box PCs are in the automotive industry, traffic engineering as well as production and manufacturing technology.



- ✓ Fanless ultra-rugged enclosure
- ✓ High-performance Intel® CPUs
- ✓ Configurable PCIe / PCI slots
- ✓ Extremely sturdy with shock and vibration resistance
- ✓ Graphics cards or MXM modules for Edge Computing



Nuvo-7000E/P/DE

Embedded Box PCs are available in various performance classes, sizes, protection classes and with different interface options and expansion slots. These powerful systems perform tasks such as machine control, regulation or monitoring operations as well as data and signal processing.

MVP-6120-MXM



BOXER-8521AI

Nuvo-7166GC



Built-in GPUs / MXM Modules

In addition to embedded systems with fixed GPUs, we also offer hardware where the graphics cards can be replaced at any time. This enables additional performance boosts for edge computing applications.

Supported GPUs:

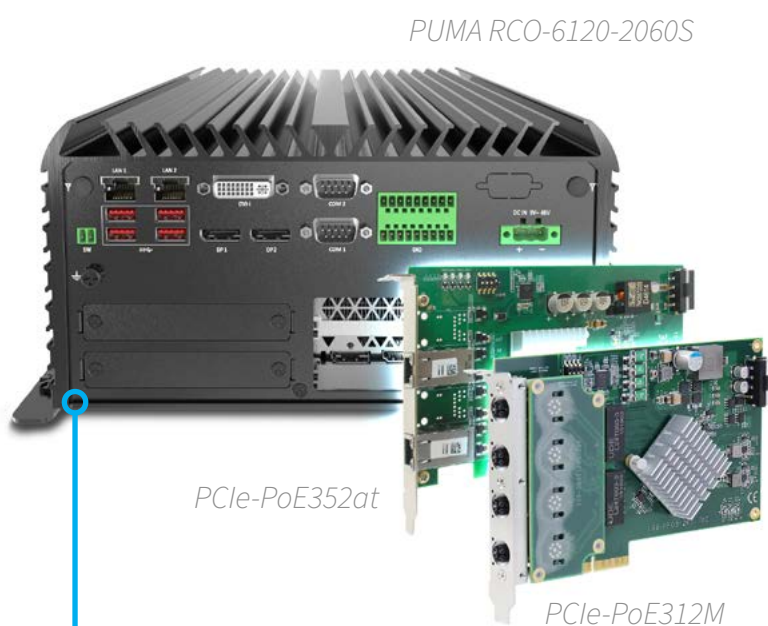
- ▶ **NVIDIA®:** RTX and Quadro
- ▶ **AMD:** Radeon RX Vega 8 / 10
- ▶ Single / double-width GPUs
- ▶ Up to 250W power input



Optional PCIe/PCI Slots

Box PCs with PCIe/PCI expansions offer customers the necessary flexibility to expand their embedded computers with additional interfaces. Expansion slots are of utmost importance, especially for simultaneous control of various machines, displays and peripherals in industrial environments.

- ▶ **PCIe / PCI:** Up to five slots
- ▶ **Bus system:** PCIe 3.0 or PCIe 4.0
- ▶ Optional expansion slots for USB-connectors, Power-over-Ethernet, framegrabber cards and many more interface options



Up to five PCI Express expansion slots available

Wall / Din-Rail Mounting

Due to their mounting possibilities, our DIN rail PCs are best-suited for effective machine control in production halls, in control cabinets or e.g. for data acquisition and processing. Most of our embedded hardware can be purchased with according mounting options.

Mounting options:

- ▶ DIN-Rail mount option
- ▶ Mount to any wall with mounting brackets



In-Vehicle Installation

Vehicle computers and on-board controllers are best-fit for the acquisition and processing of vehicle data. Their sturdy design and mounting options allow them to be used in any vehicle application. Optional PCIe expansion modules, including Wi-Fi, 3G/4G or GPS modules, can also be used for on-board communication.

- ▶ **Measuring:** Capture and process vehicle data
- ▶ **Board controller:** Control in-vehicle processes



PUMA Mini Core



BOXER-8251AI

Compact Mini PCs

Our embedded mini PCs offer you a space-saving and cost-efficient embedded platform with the most essential connection types. HDMI, Gigabit LAN, USB and serial ports are available in housings which are no larger than a DIN A5 paper sheet.

- ▶ **Mini PCs with NVIDIA® Jetson module:** Space-saving AI Edge Computing systems
- ▶ **Fanless** embedded controllers with compact shock-proof enclosures

IP65 Rugged Computers

We offer fully IP65 and even IP67 certified embedded PCs and ultra rugged hardware even for the most extreme applications. In addition to dust and water protection, there are embedded computers with military standard MIL-STD-810G. This provides high shock and vibration resistance, ensuring a reliable operation.

- ▶ **IP65/IP67:** water and dust protection
- ▶ **MIL-STD-810G:** Resistance to drops from heights of up to 1.2 meters, vibration and shock, high altitudes (low pressure), high temperature shocks and more

SEMIL-1700



WM Full IP65 Box PC

19-Inch Industrial PCs

More and more companies are opting for 19-inch industrial PCs due to digitalization of infrastructures. The main advantage of these PCs is that they guarantee the best performance even under harsh conditions in industrial environments and ensure the quality of work processes. These computer systems are often exposed to environmental influences, such as dust, extreme temperatures, humidity,

electromagnetic interference or mechanical shocks and vibrations. Therefore, it is important to design solutions which operate reliably for these applications. In our portfolio you will find a broad range of 19-inch industrial PCs for **highest requirements and standards, robustness, reliability, durability** as well as **long-term availability**.



1U Systems

BRESSNER offers you a wide range of powerful Intel® Core™ and Xeon® processors, form factors, RAM, storage capacity and expansion slots for your 1U servers. Our in-house production facility assembles your desired configuration according to the quality management system ISO 9001:2015.

- ▶ **CPUs:** Intel® Core™ i9 / i7 / i5 or XEON®
- ▶ **Power adapters:** AC or DC
- ▶ **Custom** configurations are available



Fanless



Custom configuration



1U 19" Leopard III

2U - 4U Systems

You can customize your personal 2U or 4U 19-inch industrial computer. We offer four different basic configurations as an option, consisting of: Entry, Basic, Pro and Ultra.



Custom configuration

2U 19" Panther



4U 19" Tiger



4U 19" Panther



Our basic configurations at a glance

	Entry	Basic	Pro	Ultra
Rack Unit	2U or 4U			
CPU	Intel® Core™ i3-9300	Intel® Core™ i5-9500	Intel® Core™ i7-9700	Intel® Core™ i9-9900
RAM	8GB DDR4 2666MHz (up to 128GB)	16GB DDR4 2666MHz (up to 128GB)	32GB DDR4 2666MHz (up to 128GB)	64GB DDR4 2666MHz (up to 128GB)
Storage	incl. M.2 SSD 256GB and 2.5" SSD 512GB	incl. M.2 SSD 500GB and 2.5" SSD 1TB	incl. M.2 SSD 500GB and 2.5" SSD 1TB	incl. M.2 SSD 1TB and 2x 2.5" SSD 2TB
Chipset	Intel® Q370			
OS	incl. Windows 10 IoT Enterprise LTSC 64-bit, Linux or Server OS optional			

Panel PCs & Touch Displays

Many industrial sectors rely on the use of panel PCs and touch display solutions due to a massive gain in efficiency. For example, they are used in industrial and process automation, for

machine control or as kiosk systems. Thanks to their sturdy design, these systems can be used in a wide range of applications.



Display sizes
from 5.7 to 65 inch

MODERN HMI DISPLAY SOLUTIONS AND TOUCH PANELS FOR INDUSTRIAL AUTOMATION AND MACHINE CONTROL



TOUCAN Skylake / J1900 series



TOUCAN Panel PCs

- ✓ 10.1" to 21.5" screen diagonals
- ✓ Available with Intel® Core™ Skylake or Intel® Celeron® J1900 CPU
- ✓ PCAP multitouch with IP65 front display
- ✓ Ultra-flat fanless metall chassis



Webcam
2 Megapixel



Wi-Fi & Bluetooth
802.11 b/g/n WLAN card +
Bluetooth 4.0



MSR (Magnetic Stripe Reader)
3-Track MSR (USB)



Device Box
5 Smart IC card reader, RFID,
scanner, line-out, mic-in

Chassis Type Solutions

Metal chassis

Our chassis-type panel PCs and displays are equipped with a metal housing which protects the touch screen all around. This build-type allows fanless designs as well as VESA wall mounting. The devices are perfectly suited for use as HMI terminals in industrial automation.

- ▶ **PCAP multitouch, resistive or SAW**
- ▶ **IP65 or IP66** protection (front or full)
- ▶ **Marine-grade or ATEX** certification



Anodized housing
for improved corrosion protection

Magnetic I/O cover
Protective cover for connectors



Stainless steel chassis

The bar for certified equipment and hardware in food processing industries or in production lines is very high. For such cases, we offer panel PCs and touch displays made of SUS304-standardized corrosion-resistant stainless steel up to IP69K. This means that the devices can withstand even cleaning with high-pressure devices.

- ▶ **PCAP multitouch or resistive**
- ▶ **SUS304** stainless steel (or **SUS316**)
- ▶ **Full IP66** chassis (upgradeable to **IP69K**)



M12 connectors
preventing ingress of
water and dust



Panel Mount Solutions

*EAGLE Panel Mount
Celeron® series*

With the so-called panel mount installation, the touch solution including housing is inserted precisely into the cutout of the mounting wall and then screwed to the back. The protruding frame covers the edges of the cutout and ensures a clean finish. This design allows the devices to be perfectly installed in control cabinets or flush-mounted boxes.

- ▶ Display sizes from **5.7 to 32 inch**
- ▶ **PCAP multitouch, resistive** or **SAW**
- ▶ With fan or **fanless** design
- ▶ **IP65/IP66** protection, **Marine-grade/ATEX** or **MIL-STD-810G** certification



Flush Mount

Housing and interfaces disappear in the flush-mounted box



Flush mount solutions
for industrial automation,
machine control, kiosks or
automated buildings

Open Frame Solutions

*WM OF display series
(High brightness optional)*

Our open-frame monitors are suitable for achieving an even touch surface while keeping external dimensions flat. The industrial monitors are completely controlled in the metal housing behind the installation wall, so that power supply units and peripheral cables are not visible.

- ▶ Display sizes from **5.7 to 42 inch**
- ▶ **PCAP multitouch, resistive, SAW** or **without touch feature**
- ▶ Optional **high brightness displays** are available



Built-in monitors

with open frame for flush insertion into housings or machine control cabinets

INDUSTRIAL TOUCH INTERFACES

Empowered by
Hardware Solutions

Our panel PC and touch display solutions have been specifically designed for daily use in the most demanding environments:

- ▶ Industrial Automation
- ▶ Smart Factories
- ▶ Production Facilities
- ▶ Switch Cabinets and Server Rooms
- ▶ Food Processing



Rugged Tablets & Handhelds

Industrial tablets often have to be operational in the most adverse environments, which is why they are also called rugged tablets. Especially outdoors, these systems have to withstand high stresses caused by environmental influences.

The extremely sturdy industrial and outdoor tablet PCs meet precisely these high

requirements and were designed specifically for these demands. The mobile high-tech solutions may be equipped with various operating systems and can be customized for individual needs.



ULTRA-STURDY OUTDOOR-TABLETS AND INDUSTRIAL HANDHELDS FOR THE MOST EXTREME APPLICATIONS

SCORPION 10" PLUS



SCORPION 6"



SCORPION Fields of Application



INDUSTRY

- ▶ Production halls
- ▶ Crafting
- ▶ Automation



LOGISTICS

- ▶ Warehouses
- ▶ Transportation
- ▶ Forklifts



EMERGENCY CARS

- ▶ Police cars
- ▶ Firefighter vehicles
- ▶ Ambulances



AGRICULTURE & FORESTRY

- ▶ Precision farming
- ▶ Field operation



MILITARY

- ▶ Direct operation in the field / outdoors



DRONE CONTROL

- ▶ Remote control drones via radio connection

SCORPION Tablets

Outdoor rugged tablets

Our SCORPION rugged tablets are the perfect solution for the diverse demands of industrial indoor and outdoor environments.

- ✓ 8 ~ 12 inch display sizes
- ✓ IP65 + MIL-STD-810G
- ✓ Windows 10 IoT or Android OS
- ✓ 1D/2D barcode reader (optional)
- ✓ RFID NFC reader
- ✓ Wide range of accessories



SCORPION 10X - Android



SCORPION 12"
(with keyboard and
folding stand)

Comprehensive accessories

We offer a range of practical accessories for our SCORPION rugged tablets. You can choose spare batteries, folding stands, car mounts or docking stations and we will deliver the right solution in a full package.

Vehicle mount for
SCORPION 10X Android

Vehicle/forklift mounts
available for SCORPION
12", 10" PLUS, 10X and
8" PLUS



SCORPION Handhelds

Our industrial handhelds offer reliable technology in a rugged housing. Our handheld devices are water- / dustproof and available with screen sizes from four to six inches. An optional 1D/2D barcode reader, RFID NFC reader, GPS as well as Bluetooth allow you to adapt your PDA exactly to the respective field of application.



Equipment and accessories

Our SCORPION 6" delivers 3G/LTE, GPS, Wi-Fi and Bluetooth protocols, as well as NFC and the ability to read barcodes through a 1D or 2D barcode scanner. We also offer matching accessories such as our practical pistol grip.



SCORPION 6"

Our reliable and rugged 6-inch rugged handheld is suitable for use in modern logistics centers, warehouses, production halls, crafting facilities or for transportation.

- ✓ Withstands falls up to 1.2 meters
- ✓ IP67 dust and water protection



Removable battery

The handheld can be charged with our separate docking station, making the battery last for a full workday. The battery is quick and easy to replace and has a capacity of 5,000 mAh.

SCORPION Accessories

A range of optional accessories is available for our SCORPION rugged tablets and handheld solutions. The following components can be purchased additionally:

- ✓ Office docking charger
- ✓ Spare batteries
- ✓ Vehicle / forklift mounts with charging feature
- ✓ Capacitive touch pens
- ✓ Dockable keyboard (only for SCORPION 12")
- ✓ Pistol grips for handheld devices
- ✓ RAM mounting solutions



Mobile Solutions

for industry, logistics,
emergency vehicles,
military as well as
agriculture and forestry

IloT Hardware



The Internet of Things (IoT) is one of the most important topics of the 21st century. IoT is not only trend-setting for the connection of everyday devices, such as cars or kitchen items, but is also used in the industrial sectors with IoT hardware for the automation of industrial processes or for the networking of entire cities. Together with our long-term partner Digi International, we design complex

manufacturing processes more efficiently and minimize costs, as well as security risks. Industrial IoT (IIoT) refers to the implementation in an industrial environment, such as the control of sensors or the exchange of data between workstations, machines or monitoring systems.



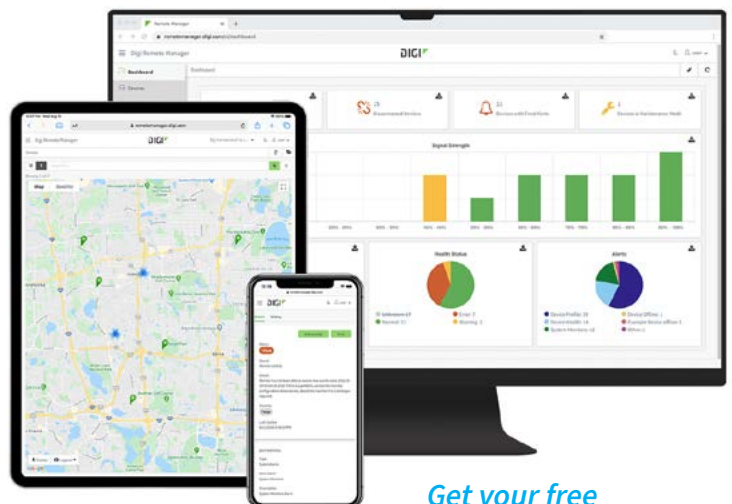
Cellular Routers

- ▶ **Transportation Routers:** for public transportation
- ▶ **Industrial Routers:** with ATEX or MIL-STD-810G
- ▶ **Enterprise Routers:** for business-critical networks



Digi Remote Manager

- ▶ Industry-leading cloud & edge tools for quick and easy setup and management of assets and inventory
- ▶ Monitor performance and security of networks and devices with bi-directional communications
- ▶ Automate firmware and software updates across entire networks
- ▶ Integrate device data via APIs
- ▶ Get detailed reports and real-time alerts on network and device health



Get your free 90-day trial!

Digi XBee® Ecosystem



RF / cellular modules, cellular gateways and developer tools

Digi XBee® is a complete product set of wireless modules, gateways, adapters and software, all designed to accelerate wireless development for global enterprises and cities. A single socket already allows you to connect to IoT networks all around the world. With the authentic Digi XBee® footprint, you can future-proof any design you wish for.



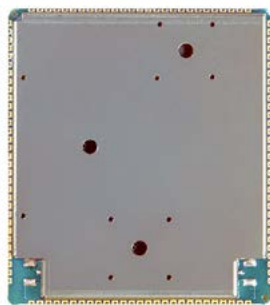
*Digi XBee®
RF/cellular modules*

*Digi XBee®
industrial gateway*

*Digi ConnectCore®
8M Nano*



Digi ConnectCore® 8X



Digi ConnectCore® 6+



Digi ConnectCore® 6UL

System-on-Modules

For connected IoT applications, we offer Digi System-on-Modules (SOMs) with multiple embedded wireless solutions, including Bluetooth and 802.11a/b/g/n/ac. The embedded wireless solutions are built with the latest processors and work with the Digi TrustFence® security framework.

- ▶ **CPUs:** NXP i.MX 8M Nano, NXP i.MX 8X, NXP i.MX6UL, NXP i.MX6
- ▶ **Form factors:** Low-profile Digi SMTplus™ form factor
- ▶ **Pre-certified:** 802.11 a/b/g/n/ac and Bluetooth® (4 or 5)
- ▶ **Digi TrustFence®:** Embedded device security framework

USB Connectivity



With the help of network-bound USB-to-Ethernet hardware, such as USB over IP hubs, you can connect up to 24 peripheral devices via USB interfaces to a PC over LAN. Furthermore, we offer USB-to-serial converters and USB hubs.

- ▶ **USB connectors:** USB-to-Ethernet (USB 3.1 Gen 1) and USB-to-Serial connectors (USB 3.0)
- ▶ **Number of ports:** Up to 24
- ▶ **Gigabit Ethernet** and SFP+
- ▶ **Software features:** VMWare support and Digi Remote Manager (for Digi AnywhereUSB Plus)

*Digi Hubport® series
(4, 7 or 14 ports)*



*Digi AnyWhereUSB®
Plus series
(2, 8 or 24 ports)*



*Digi One® IAP
family*

Serial Connectivity

Our terminal servers and serial servers connect network-critical IoT devices to applications and provide serial-to-Ethernet options. Administrators have multiple connection options, for example, using Digi's RealPort driver or TCP or UDP sockets.

- ▶ **Serial ports:** RS-232 or RS-232/422/485
- ▶ **Number of ports:** Up to 32
- ▶ **Gigabit Ethernet:** 10/100/1000Mbit/s
- ▶ **Protocols:** TCP/UDP, PPP, DHCP/RARP/ARP-Ping, Telnet, Reverse Telnet/SSHv2/SSL, Modbus to Modbus, IPv4/IPv6



Digi ConnectPort LTS 8/16/32

Ethernet Switches



Our Ethernet switches are ideal for applications that require high bandwidth as well as field communications. The devices offer excellent EFT and ESD protection for unregulated voltage inputs. A power redundancy function can be achieved by a dual current input with reverse polarity protection. In addition, all metal enclosures can be DIN-rail mounted.

We also offer shock and vibration resistant Ethernet M12 Gigabit Ethernet ports that are X-coded and A-coded with PoE options. All industrial M12 Ethernet switches feature a rugged IP67 metal housing preventing an ingress of dust and water.



INDUSTRIAL ETHERNET

Empowered by
Hardware Solutions

- ▶ Unmanaged-, Managed-, Power-over-Ethernet switches and media converters
- ▶ Up to 28 Ethernet ports (M12, PoE, SFP or SFP+ ports optional)
- ▶ 10-Gigabit, 1-Gigabit or 10/100Mbit/s
- ▶ IP30 or IP67 protection (with M12 connectors)
- ▶ Operating temperature: -40° to 75°C

GPU Computers



High Performance Computing (HPC) applications require graphics processing units (GPUs) to generate high computing performance, improved infrastructures and cost savings. Whether you need GPU computers, GPU servers, GPU extensions or embedded PCs with GPU, with our product portfolio you will find extremely high-performance server solutions for various requirements. Our GPU computers can

increase the performance of your systems by thousands of processor cores if required. This means you are also well equipped for applications in the field of High Performance Computing (HPC) - such as for Deep Learning, the management of XL data centers or the fully automated extraction of raw materials. Our complete GPU solutions meet the highest possible demands.

Up to 10 graphics card slots available for any NVIDIA® GPUs!



GROUND-BREAKING GEN4 PERFORMANCE IN ONE CHASSIS

Empowered by
Hardware Solutions

Gen4 4U Pro 10-Slot



GPU Servers

Our GPU servers support various artificial intelligence applications. For deep learning, a single-root complex can use all GPU clusters to focus on large learning processes and CPU for small tasks. For machine learning, a dual root complex can allocate more tasks to CPUs and arrange less distributed learning between GPUs.

- ▶ Scalable Intel® Xeon® Dual or Single socket
- ▶ Ten, eight or four GPU slots



SHARK A.I. 10-GPU Server

GPU Expansions



Our GPU appliances add graphics card slots to existing servers. They are specifically designed for HPC applications such as deep learning, data centers or oil and gas exploration.

- ▶ Up to 10 slots available
- ▶ Desktop or 4U server chassis
- ▶ PCIe Gen4 or Gen3 (x16 or x8)
- ▶ Up to 4000W power supply



ExpressBox 4400



NVIDIA® RTX A6000

PCIe Expansions



When it comes to networking servers and PCI Express devices, PCIe/PCI expansions are the high-speed standard par excellence. That's because expansion interfaces not only outperform USB and Ethernet, but are also more reliable and cost-effective. Not having to install software means no overhead and low latency, making PCIe expansion interfaces attractive for a wide range of applications. Here, the transfer speed for PCIe depends on the version and the number of links or lanes. The higher the version and the more links, the higher the bandwidth and the higher the transfer speed.



Year-Long Expertise

As part of OSS, we are among the largest supplier of PCIe adapters and expansion components in the world. We offer emerging technologies such as PCI Express (PCIe), NVLink, Infiniband and Ethernet.



High-Level Tech Support

We have competent technical support engineers around the world. Our experts will be happy to advise you personally even for custom solutions.



Guaranteed Quality

We take quality assurance very serious and back each of our products with a warranty of up to 5 years. Additional benchmark tests ensure that you get exactly the performance you want.

Compare all PCI Express transfer rates

PCIe	Bandwidth per link	PCIe x1	PCIe x4	PCIe x8	PCIe x16	Line code
1.0	2.5GT/s 2.5GBit/s	250MByte/s	1GByte/s	2GByte/s	4Gyte/s	8b10b
2.0	5GT/s 5GBit/s	500MByte/s	2Gyte/s	4Gyte/s	8Gyte/s	8b10b
3.0	8GT/s 10GBit/s	0.9846GByte/s	3.983GByte/s	7.877GByte/s	15.754GByte/s	128b/130b
4.0	16GT/s 20GBit/s	3.9GByte/s	7.877GByte/s	15.754GByte/s	31.508GByte/s	128b/130b

PCIe Expansion Systems



Our high-quality PCIe/PCI expansion systems can conveniently expand your IT infrastructure outside computers with PCIe cards. This allows state-of-the-art hardware - such as particularly powerful GPU cards - to offer maximum performance.

- ▶ Up to 16 PCIe slots per box



Gen4 4U Value 10-Slot



PCIe
Gen4

PCIe Components

Our PCI Express components have long-term availability and can be reliably integrated into existing infrastructures.

- ▶ **PCIe adapters and adapter cards:** x1, x4, x8 or x16
- ▶ **PCIe cables:** Up to 300 meters long, with PCIe or Mini-SAS connectors (Gen4)
- ▶ **Expansion backplanes:** Up to eight PCIe Gen4 slots (x4, x8 or x16)

PCIe Expansion Kits

Create a local host-to-target connection from computer to end device with our PCI Express expansion kits.

- ▶ **Host-to-target** Cable adapter kits with adapter cards and PCIe / Mini-SAS cables
- ▶ **PCIe Gen4** support with up to 256Gbit/s data transfer rate
- ▶ **Individual expansion kits** can also be configured



PCIe
Gen4

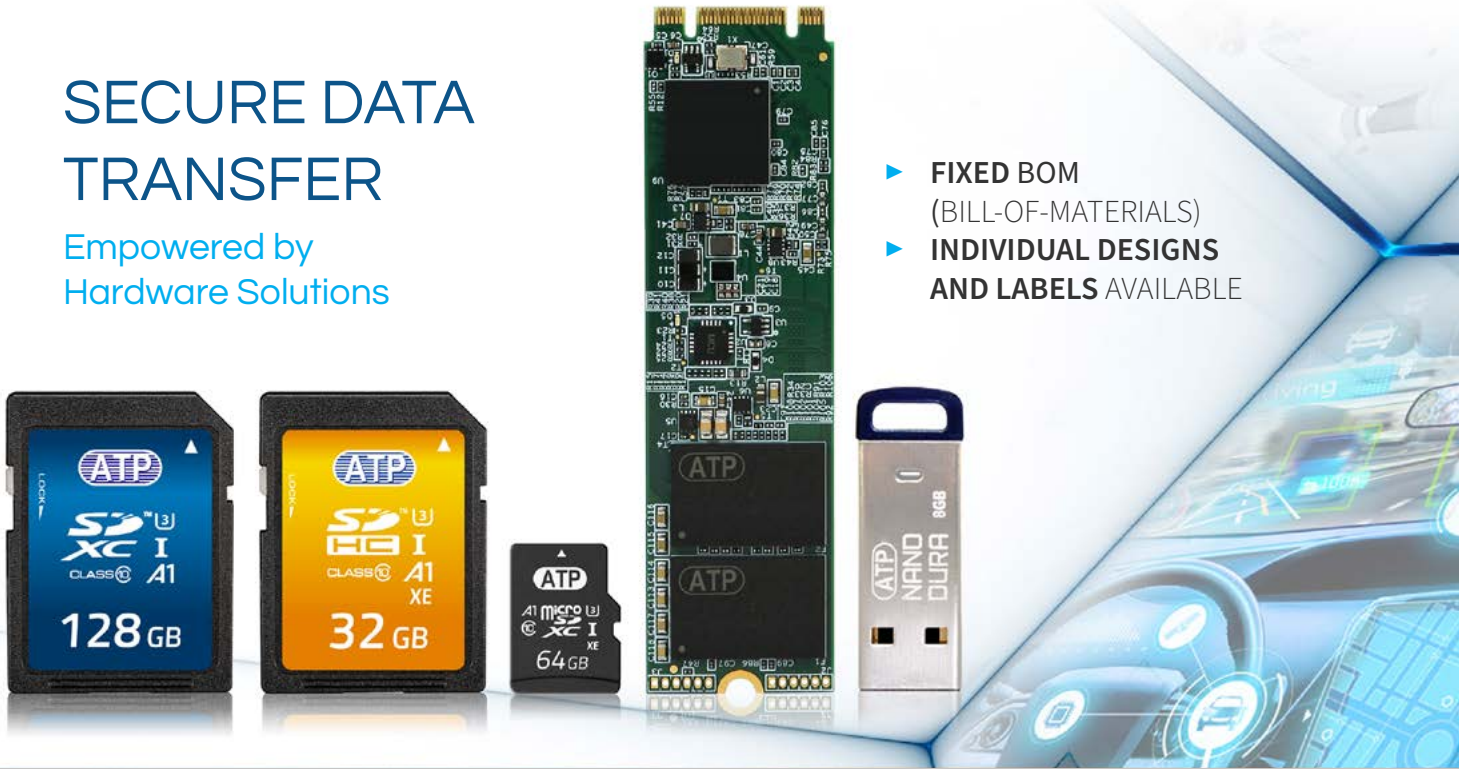
Industrial Flash Storage



SECURE DATA TRANSFER

Empowered by Hardware Solutions

- ▶ **FIXED BOM** (BILL-OF-MATERIALS)
- ▶ **INDIVIDUAL DESIGNS AND LABELS AVAILABLE**



Industrial SSDs and Modules

Thanks to effective emergency power mechanisms, our SSDs (solid-state drives) as innovative NAND Flash solutions provide protection against power loss and ensure data integrity in data centers, networks or thin clients.

- ▶ **Up to 1.92TB** storage capacity
- ▶ **SLC, pSLC or 3D TLC** available
- ▶ **2.5" SATA, M.2 NVMe or mSATA**

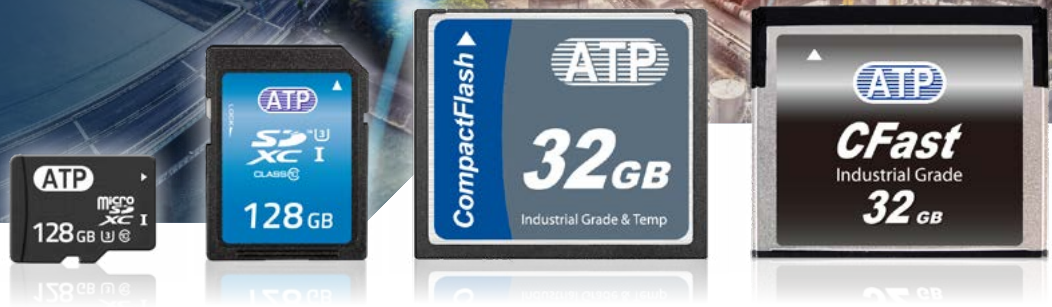


- | | | |
|--|---|---|
|  Hardware-based Power Loss Protection |  Advanced Wear Leveling |  TCG Opal 2.0 Self-encrypting Drives |
|  Life Monitoring / S.M.A.R.T. |  Secure Erase eliminates Data Remnants |  Industrial Operating Temperatures |

Industrial Memory Cards



- ▶ **Up to 256GB** storage capacity
- ▶ **SLC, pSLC or TLC** available
- ▶ **Form factors:** SD, microSD, Compact Flash and CFast cards



AutoRefresh
Error Bit Monitoring



Life Monitoring /
S.M.A.R.T.



Industrial Operating
Temperatures



Advanced Wear
Leveling

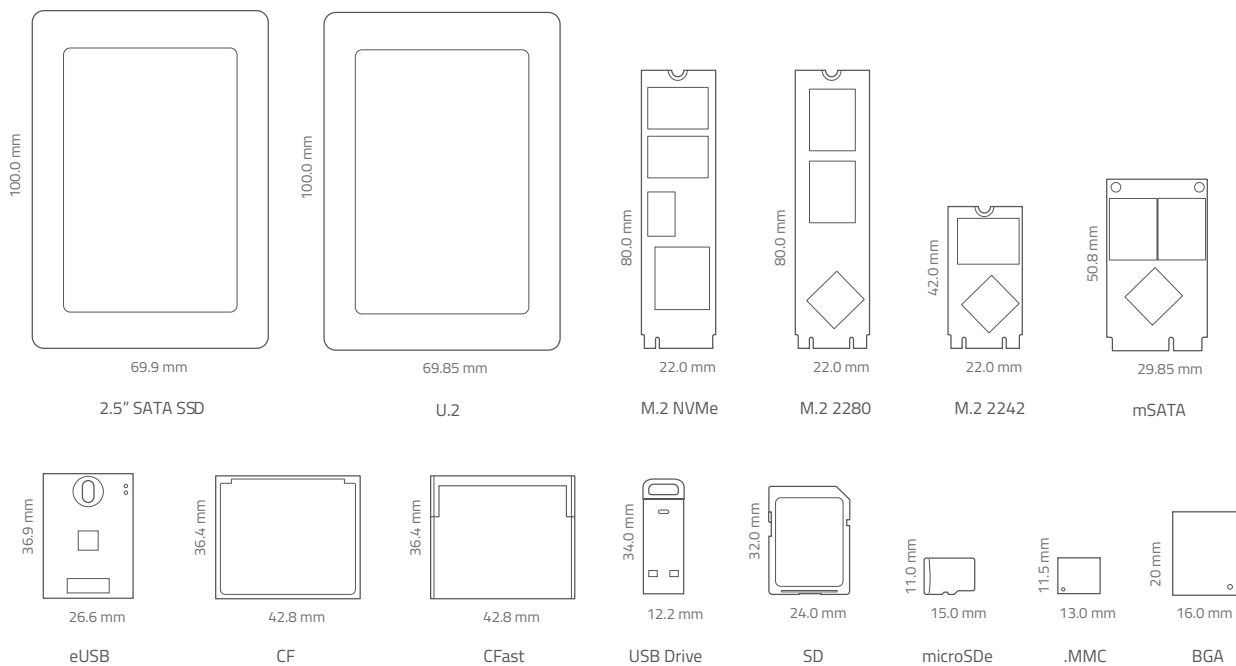


System-in-Package
Component Protection



Hardware-based
Power Loss Protection

All Form Factors



Medical Hardware

SEAL Panel PC Series

Special hardware is used in the medical industry, especially for the visualization of medical findings. In order to maintain a sterile environment in laboratories, hospitals or doctors' offices, this hardware must also comply with current standards. These requirements are met by an antibacterial housing and fanless design.

Certifications:

- ✓ **CE:** EN60601-1-2:2015 (V4.0)
- ✓ **MDD:** EN60601-1:2006 / A1:2013 (V3.1)
- ✓ **VCCI:** 2016-11, Class B (PSU/battery with PSE)
- ✓ **FCC:** Part 18 Class
- ✓ **BUL:** ANSI / AAMI ES60601-1:2012 (V3.1)
- ✓ **cUL:** CAN / CSA-C22.2 No. 60601-1:2014, SO 14971 / IEC62133

SEAL 22C - Core™ i7/i5



SEAL 19C - Core™ i7/i5



SEAL 15C - Core™ i7/i5



Anti-bacterial chassis



IP65 display (up to full HD)



Optional hot swap battery for continuous operation

Medical Box PCs

We offer Medical Box PCs with Intel® Core™ i7/ i5/i3 processors of the sixth generation. The chipset offers support for all LGA-1151 Skylake processors with Q170 and Intel® Graphics 530 and a maximum power dissipation of 35W.

- ▶ Medical-grade certification: EN60601-1-2:2015
- ▶ Intel® Core™ i7 / i5 / i3 Skylake CPU
- ▶ Optional two Mini-PCIe x16 slots

WPC-766E



SEAL Medical Tablet - 12"



SEAL Medical Tablet - 7"

Medical Tablets

Our medical tablets are specifically designed for mobile handling of patient data. They are drop-proof as well as water and dust resistant.

- ▶ Medical certification: EN60601-1-2:2015
- ▶ With 12.2" or 7" screen diagonals
- ▶ Intel® Atom™ x5-Z8550 CPU
- ▶ Anti-bacterial enclosure
- ▶ Windows 10 OS (optional)

Medical Servers

Digi medical servers, such as the Connect ES series, are used for applications that need to establish Ethernet connections between serial devices and central data management systems.

- ▶ IEC 60601 3rd Edition certification
- ▶ Four or eight galvanically isolated RS-232 connectors

Digi Connect ES series



Digi Connect WS series

Unified Communications

With digitalization, the trend is moving more and more towards virtual working and home office. Digital work brings opportunities and challenges at the same time, which is why it is becoming increasingly important to embrace the trend of virtualization and adapt phones and telephony software, fax, e-mail, IM, web, audio and video conferencing.



FonComfort™ Telephony Suite

Expand your Skype® for Business client with essential call features

- ▶ On-prem or server version available
- ▶ Detailed presence and contact information for quicker call handling
- ▶ FonComfort™ call control window
- ▶ Central administration via GUI
- ▶ Setup and manage individual call forwarding (by presence state, time of day, date, calendar period and more)
- ▶ Compatible with Kuando Busylights

FonComfort Professional

Zusätzliche Telefonie-Funktionen für Skype® for Business

FonComfort Ultimate

Chef- / Sekretär:innen Telefonie-Konsole

FonComfort Smart Routing

Zentrales Administration Tool



SKYPE® FOR BUSINESS CLIENT

Sangoma UC Solutions



We provide enterprise communications solutions that enable SMBs and enterprises to do business. We also provide developers with open source toolkits to design their own telephony applications, the hardware and

software needed to connect different networks and devices, and key components for IP PBX, IVR and UC solutions.



Sangoma Switchvox

Switchvox is designed for your business. With enterprise-grade features, an all-inclusive pricing model and an award-winning design, Switchvox is not just another VoIP phone system, but the smartest solution to combine all the benefits of modern UC tools.

- ▶ Web-based interface
- ▶ Call control and management
- ▶ Suited for mobile devices
- ▶ Smart call distribution
- ▶ Voicemail / messaging
- ▶ Compatible with Microsoft® Teams



Cloud



On-Premise



UC SOLUTIONS FOR BUSINESS COMMUNICATION

Sangoma PBXact

- ▶ Powerful UC platform for up to 5,000 users
- ▶ Zero-touch provisioning for efficient configuration of IP phones
- ▶ Available as hardware or software-only
- ▶ Extensive PBX and call center features as well as MS Outlook integration, SMS, IM, CRM or help desk
- ▶ Built-in VPN features for remote users



Voice-over-IP Gateways

- ▶ Connect existing IP PBXs to VoIP infrastructure or to ISDN/analog networks
- ▶ Up to 120 VoIP channels available
- ▶ Easy installation and configuration
- ▶ Connect up to 24 or 50 analog terminals over a distance of 8km

Session Border Controller

- ▶ Supports up to 4,000 simultaneous calls
- ▶ Session-based licensing model with no hidden costs
- ▶ Optional TDM/PSTN connection
- ▶ Available as hardware or software-only
- ▶ Connection to multiple VoIP/SIP trunks



Telephony Cards

Our Diva T1/E1/PRI, BRI and analog telephony boards are also available in low-profile or half-size form factors, among others. The boards offer a wide range of communication functions:

- ▶ Voice, speech and conferencing
- ▶ Voice-over-IP
- ▶ Modem and fax features



Dialogic® Diva BRI boards



Sangoma PSTN cards



High-speed CPU integrated



Realtime voice transcoding



Plug & play standard



Compatibility with essential PBXs

Hardware for Microsoft® Teams

Our team always gives its all to make you more comfortable and efficient on the phone at work. Effective communication can not only have a positive impact on your productivity, but also can increase brand awareness and sales. For this purpose, in addition to the audio-visual

presence indicators Kuando Busylight (Alpha and Omega), we also offer wireless or wired headsets and conference systems.

Busylight Alpha



EPOS DW Pro 2 ML



Busylight Omega

EMEA

BRESSNER Technology GmbH
Industriestrasse 51
82194 Groebenzell, Germany

Phone: +49 (8142) 47284-0
Fax: +49 (8142) 47284-77
E-Mail: vertrieb@bressner.de

USA

One Stop Systems Inc.
2235 Enterprise Street #110
Escondido, CA 92029, USA

Phone: +1 (877) 438-2724
Fax: +1 (760) 745-9824
E-Mail: sales@onestopsystems.com

Opening hours:

EMEA: Mo. - Fr. 8:00 AM - 17:00 PM (GMT+1)
USA: Mo. - Fr. 8:00AM - 17:00 PM (PST)

