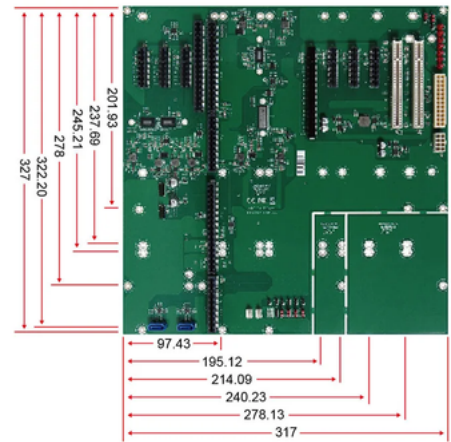


PBPE-10P2

Industrial-grade PICMG 1.3 backplane with 10 slots and PCIe Gen5 support

Features

- Industrial 10-slot backplane
- PICMG 1.3 format
- 1x PCIe x16 + 6x PCIe x4 slots
- 2x PCI slots
- Supports PCIe Gen5 with ROBO-8116 series



PBPE-10P2 PICMG 1.3 Backplane

The PBPE-10P2 from Portwell is a high-performance 11-slot PICMG 1.3 backplane designed for use in industrial 4U chassis. This backplane offers state-of-the-art connectivity options and is ideal for demanding industrial applications.

- **Compatibility:** The PBPE-10P2 is specifically designed for use in 4U chassis.
- **Ports:** The board features four USB ports and two SATA ports, allowing for easy and flexible connection to peripherals and storage solutions.
- **PCIe Gen 5 Support:** With support for PCIe Gen 5 in conjunction with the ROBO-8116 series, the board offers exceptional performance and future-proofing.
- **Versatile Slot Configuration:** The backplane provides various slot options: one PCIe x16 slot, three PCIe x4 slots (3 x4 signals), three PCIe x4 slots (3 x1 signals), and two PCI slots. This variety allows for the integration of a wide range of expansion cards.

The PBPE-10P2 from Portwell is the ideal solution for industrial applications that require high performance and flexibility. With its robust construction and comprehensive connectivity options, it ensures your systems are ready for future demands.

Specifications	PICMG 1.3 Backplane: PBPE-10P2
Form Factor	Backplane with 10 slots
Format	PICMG 1.3
Slots	1x PCIe x16 slot 3x PCIe x4 slots (3x x4 signals) 3x PCIe x4 slots (3x x1 signals) Supports PCIe Gen5 with ROBO-8116 series 2x PCI slots 4x USB ports 1x Dual SATA port