

OSS-KIT-EXP-7500

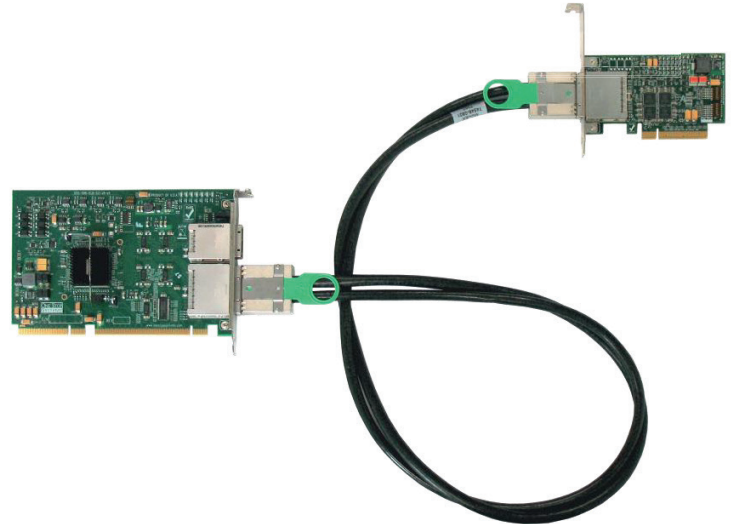
PCIe x8 Gen 2.0 cable adapter to ELB kit (expansion link board)

PCIe x8 Gen 2 expansion kit with PCIe x8 Gen 2 host cable adapter, PCIe x8 Gen 2 expansion link board, and PCIe x8 2M cable.

PN: OSS-KIT-EXP-7500

Features

- The Gen 2 host adapter card inserts into any PCI Express x8, or x16 slot on the host motherboard. The high speed cable allows data transfers to and from the host at 40Gb/s.
- The PCIe x4/x8 expansion link board installs in the system host slot of a PCIe backplane seamlessly connecting a downstream I/O device to the host computer without software.



Specifications

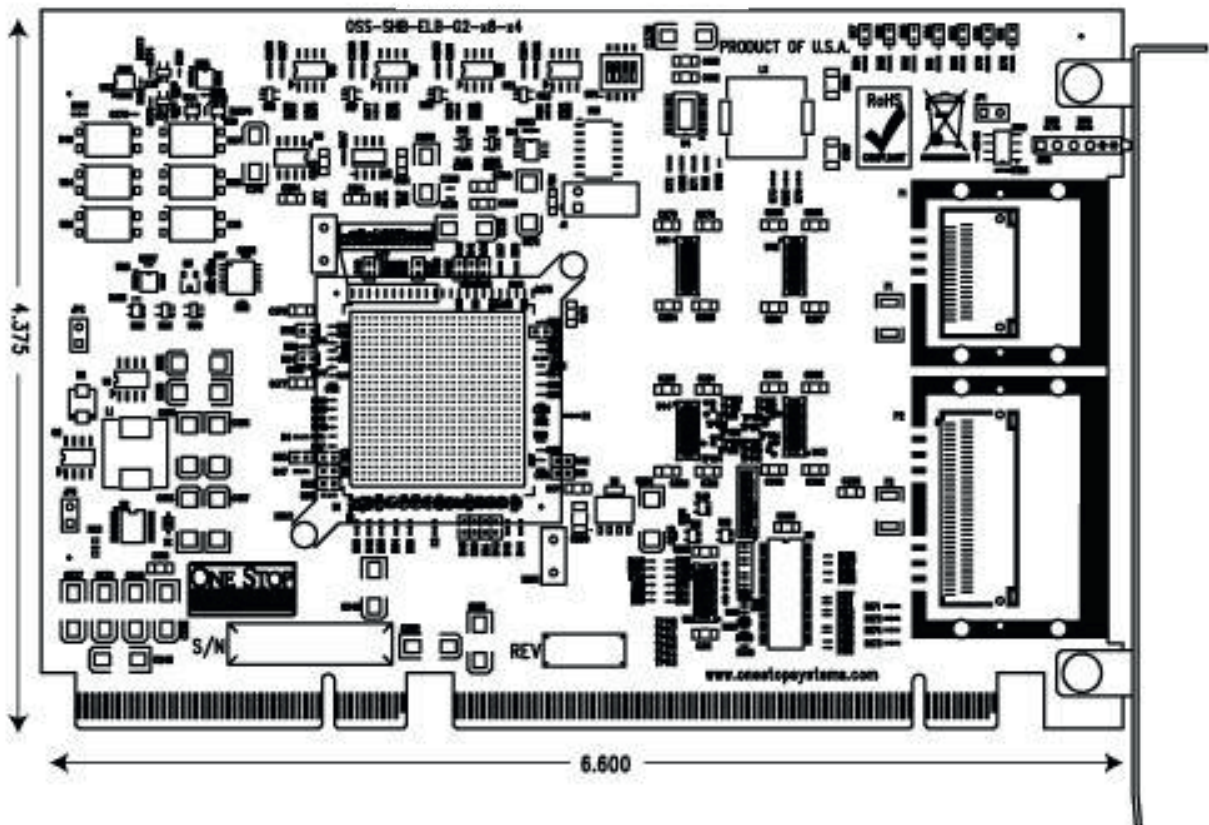
| PCIe x8 Gen 2 Host Cable Adapter | |
|----------------------------------|--|
| Form Factor: | PCIe half-card |
| Operating Temperature: | 0°C to +70°C environment |
| Storage Temperature: | -40°C to 85°C |
| Operating Humidity: | 10% to 90% relative humidity non-condensing |
| Storage Humidity: | 5% to 95% relative humidity non-condensing |
| Power: | 3.3V |
| Connectors: | PCIe x8 cable connector PCIe x8 edge connector |
| Industry Specifications: | PCIe External Cabling Specification, Rev. 1.0 PCI Express™ Card Electromechanical Specification, Rev. 2.0 PCI Express® Base Specification, Rev. 2.0 ATX Specification, Version 2.2 |
| Re-drivers: | 5.0 Gbps 4-Lane PCI Express Gen 2 Re-Driver with Equalization & Emphasis Pericom Part number PI2EQX5804 |
| Bracket: | HIB2 x8 add-in card bracket Standard and low profile brackets available No LEDs on bracket |
| Agency Compliance: | FCC Class B, CE, RoHS |

OSS-KIT-EXP-7500

PCIe x8 Gen 2.0 cable adapter to ELB kit (expansion link board)

| PCIe x4/x8 Gen 2 Expansion Link Board | |
|---------------------------------------|---|
| Form Factor: | PICMG 1.3 SHB Express system slot compliant |
| Slot Type: | System slot for the expansion chassis |
| Dimensions (H x L): | 4.375 x 6.6 in (111 x 161 mm) 1 slot wide |
| Switch: | PLX PEX8632 32 lane switch |
| Upstream Interface: | PCIe x4 over cable, PCIe x8 over cable |
| Downstream Interface: | 20 lanes of PCI Express can be auto-configured as: One x16 and one x4 PCIe links, Two x8 and one x4 PCIe links, Five x4 PCIe links |
| Front Panel Connectors: | 1 PCIe x4 cable connector, 1 PCIe x8 cable connector |
| Front Panel Indicators: | 1 green LED for x4, 1 green LED for x8 |
| Internal Indicators: | Power In-range Indicators for +12V, +3.3V & VTT (Red/Green) Power on indicator for +1V (Green). Bank of 5 board status indicators (Red) |
| Optional Features Switch Control: | 3 banks of DIP switches for PEX8632 configuration |
| Switch Debug Port: | Internal JTAG communications header |
| Heat Sink: | On-board fan header provided for optional heat sink fan |
| Operating Temperature: | 0° to 70°C (32° to 158°F) |
| Storage Temperature: | -40° to 85°C (-40° to 185°F) |
| Operating Humidity: | 10 to 90% non-condensing |
| Storage Humidity: | 5 to 95% non-condensing |
| Shock: | 30g acceleration peak (11ms pulse) |
| Vibration: | 5-17 Hz 0.5" double amplitude displacement; 7-2000Hz, 1.5g acceleration |
| Power Consumption: | 9W typical, 11.4W max +12V @ 0.675A max, 3.3V @ 1.0A Max, 5V aux @ 2.5mA max |
| Agency Compliance: | FCC Class B, CE, RoHS |

Dimensional Drawings



OSS-KIT-EXP-7500

PCIe x8 Gen 2.0 cable adapter to ELB kit (expansion link board)

