

MAGMA ExpressBox 1T

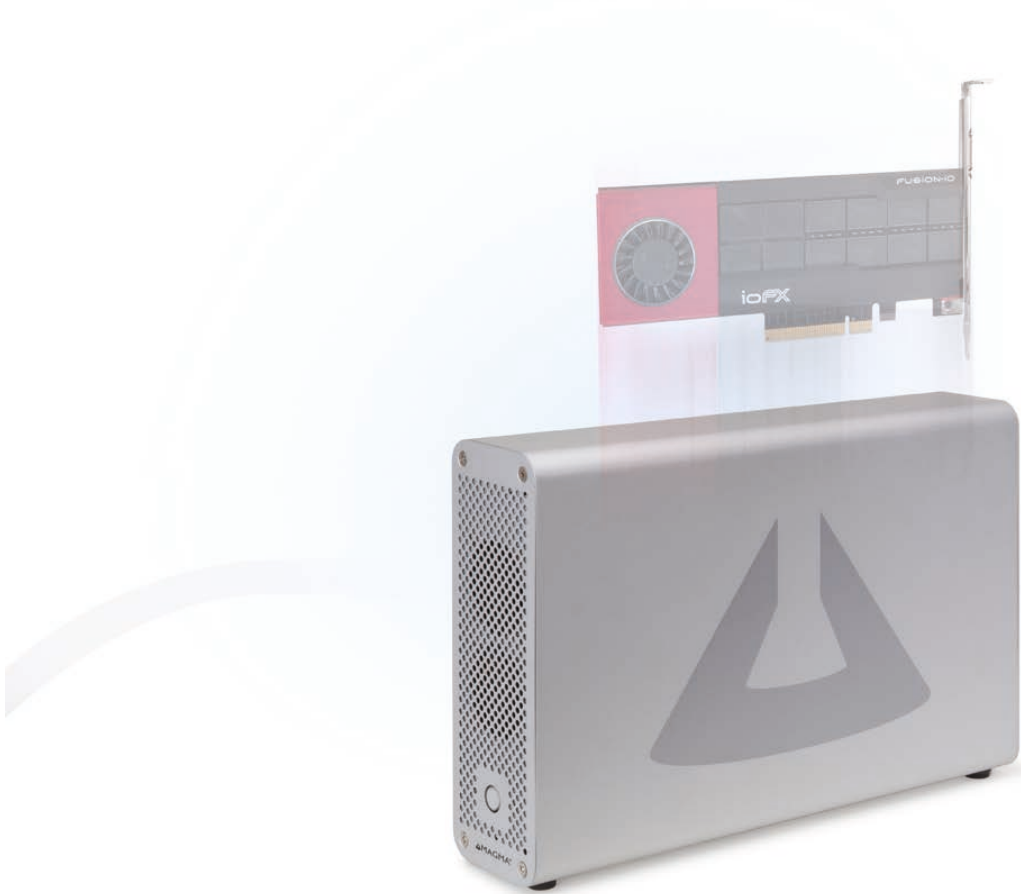


CONNECT PCI EXPRESS® CARDS WITH THUNDERBOLT 2 TECHNOLOGY

- Supports (1) half-length / full-height PCI Express card
- Thunderbolt features speeds up to 20 Gbps bi-directional
- Daisy-chain up to six Thunderbolt devices
- User controlled fan speed and noise
- External 65W power supply



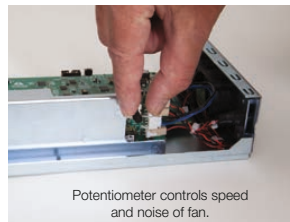
MAGMA ExpressBox 1T



Chassis opens easily with two thumbscrews.



Quick, easy installation is user-friendly. Insert PCI Express card and you're done!



Potentiometer controls speed and noise of fan.



Rugged, lightweight extruded aluminum enclosure provides portable protection.

BENEFITS:

- Attach a PCIe card to Thunderbolt equipped mobile and all-in-one computers
- Transfer data at up to 20 Gbps. That's 4x faster than USB 3.0 and 24x faster than FireWire 800!
- Daisy-chain up to six Thunderbolt devices
- Use any compatible half-length PCIe card for HD video capture, audio interface, SAS/SATA HBA, 10 Gigabit Ethernet, 8Gb Fibre Channel, SSD data transfer, and more!
- Connect to high-resolution display, such as Display-Port, mDP, HDMI, and VGA monitors

FEATURES:

- Easy Plug and Play installation
- Supports any compatible x1, x4, x8 or x16 PCIe card
- Two Thunderbolt connectors
- Two cooling fans with speed control
- Rugged extruded aluminum enclosure
- External 65W Power Supply

MAGMA ExpressBox 1T

ROCK SOLID INNOVATION - PCI EXPRESS EXPANSION MADE SIMPLE

ExpressBox 1T protects your valuable PCI Express cards in a heavy duty chassis while providing lightweight portability, so you can take high performance anywhere your work requires. The extruded aluminum shell provides a strong, protective housing while also removing heat from the cards inside. The sleek design of the ExpressBox 1T matches elegantly with your Thunderbolt equipped Mac, ensuring that you stay classy with a Magma chassis.

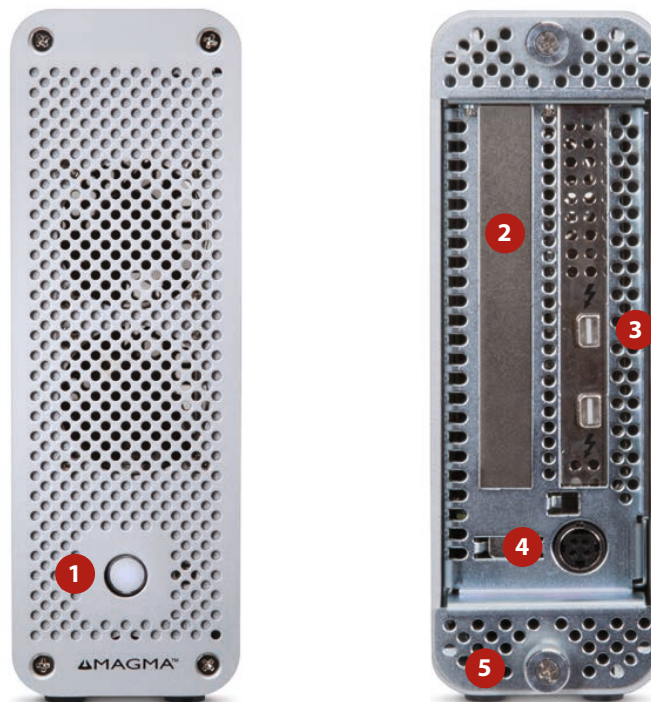
Magma's expertise in developing products that extend PCI and PCI Express signals over a cable and outside the computer provides a reliable foundation for producing rock solid products that offer the highest performance even in the most demanding configurations.

EB1T – FRONT AND REAR VIEW

1. Power indicator
2. PCI Express card slot opening
3. Thunderbolt ports
4. Power cord socket
5. Easy installation thumbscrew

HARDWARE INCLUDED

6. Power Supply



Requires Thunderbolt cable (sold separately).

SPECIFICATIONS:

MODEL NAME

EB1T: Thunderbolt 2 to PCIe Expansion - 1 Slot

BACKPLANE

- (1) Half Length PCI Express Slot
 - Physical - x16 PCIe 2.0
 - Electrical - x4 PCIe 2.0 (Thunderbolt spec)

CABLE REQUIRED

Thunderbolt™ (sold separately)

INTERCONNECT BANDWIDTH

20 Gbps Bi-directional

ENCLOSURE

Heavy-Duty Extruded Aluminum
 9.5" L x 2.3" W x 6.9" H
 (249mm x 59mm x 174mm)
 3.0 lbs (1.4 kg)

SYSTEM COOLING

(2) Fans with Manual Speed Control

POWER SUPPLY

65W External Power Supply
 100-240 VAC, 47-63 Hz

ENVIRONMENTAL

Ambient Temperature: 0° to 50° C
 Storage Temperature: -20° to 60° C
 Relative Humidity: 5% to 85% non-condensing

REGULATORY COMPLIANCE

FCC Class A Verified
 RoHS Compliant



SUPPORTED OPERATING SYSTEMS

MacOS 10.6.8 or higher
 Windows

WARRANTY

30 day money back guarantee
 1 year return to factory